

# STAINLESS STEEL LOCKERS **DIRECT2U**



## FEATURES

### Brief Description

High quality Stainless Steel Lockers suitable for many commercial applications. These lockers are a popular choice for work sites, kitchens, restaurants and hospitals.

### Specifications

- Welded construction
- 0.9mm mild Steel
- Thick 304 quality stainless steel
- Choose from multiple widths & depths
- Doors mounted on 8mm stainless steel bar
- Delivered assembled
- UK Made

### Performance

- All welds dressed and polished
- Brushed polish finish outside face
- Easy / low maintenance

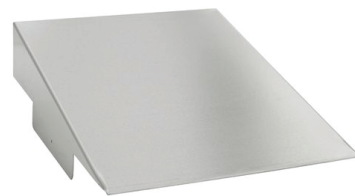
### Optional Extras (see right)

- Locker Stands
- Sloping Top
- Perforated Doors

## CONFIGURATIONS

Height	Width x Depth	No. of Doors
1800	300 x 300	1, 2, 3, 4, 6
1800	300 x 380	1, 2, 3, 4, 6
1800	300 x 450	1, 2, 3, 4, 6
1800	450 x 450	1, 2, 3, 4, 6

Dimensions in mm



Sloping Tops - Add one per locker



Locker Stands - Add one per locker

